



# VDE

## Viking Data Entry

### Data Entry Software

*for YESTERDAY, TODAY and TOMORROW.*

**YESTERDAY**—Since 1980, *VDE* has been the preferred solution for faster, easier, more accurate keyboard data capture from paper documents.

**TODAY**—*VDE* delivers the features you need to:

- Eliminate most data errors
- Improve productivity
- Save development time
- Protect against future obsolescence
- Reduce capital and operating costs

The Viking Data Entry (*VDE*) system transforms your computer into an efficient workstation for key-entering data rapidly and accurately, without additional special hardware.

**TOMORROW**—*VDE* has evolved through regular updates and will continue to meet the data entry needs of the future. Our key-from-image products share a user interface with *VDE* so that it is easy to migrate to new technologies.

The *VDE* system provides the tools for your most demanding key entry applications. *VDE* combines the best features for both heads-up and heads-down data entry. *VDE* is available for a variety of computer platforms, including; Windows®, MS-DOS®, UNIX®, and VMS®. With *VDE*, you can distribute the data entry function to information sources without sacrificing the speed and accuracy of traditional heads-down systems. *VDE* is equally effective for heads-up applications.

### VDE System Capabilities

- **Data Entry Application Generator**  
*VDE* tools make it easy to develop applications, which reduces time and cost expenditures.
- **Forms Painter**  
Use the *Viking Forms Painter* to create data entry screen “FORMS” that define data input jobs. It is so intuitive and easy to use that end-users and data entry operators can design and develop their own jobs.
- **Menu System**  
Menus and selection bars are organized for you to quickly find features and functions.
- **Operator Statistics and Logging**  
*VDE* logs activities and operator production statistics that also serve as an audit trail.
- **Database Support**  
*VDE* provides fast look-ups, substitutions, and validations from data files and database tables. (Database support varies by operating system.)
- **Customization**  
*VDE* is an open system. Use the optional “C” language Application Programming Interface (API) and associated tools to easily customize *VDE* to meet the requirements of the most demanding applications. There is no need to learn a specialized language.
- **Data File Reformatting**  
Powerful data export and reformat capabilities let you produce output files that meet the specifications of existing systems and take advantage of new techniques and technology.



# VDE®



## Many Uses for VDE

VDE is used in a variety of applications in addition to replacing traditional high-speed heads-down data entry machines. Some of the many uses for VDE include...

- Health claim forms
- Market research
- Engineering design
- Off-load mainframe
- Payroll
- Accounting
- Inventory control
- Survey forms
- Wholesale lockbox
- Clinical trials
- Database population
- Tax forms

## Features and Benefits

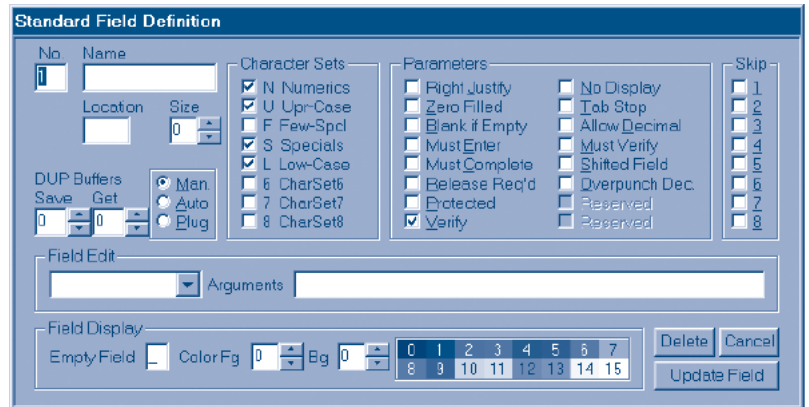
VDE has all the features that professional data entry operators require. The people who routinely enter data at 15,000 key strokes per hour (and better) have special requirements—VDE has them!

VDE Features	What These Features Mean to You
A mouse is not needed—your hands never leave the keyboard	Increase keying speed, decrease costs, improve ergonomic posture
Instant data editing and validation —Character edits —Field edits —Record edits	Improve data accuracy and prevent costly errors—the sooner an error is detected, the cheaper it is to correct—VDE can perform data edits previously available only for online input on mainframes
Easy development facility	Reduce job setup costs—programmers not necessary
Intelligent double-key verify mode with immediate correction capability	Detect and correct data errors that cannot be detected programatically with the tried and proven method
Insert, delete, modify, and append data records	Basic features needed for productive data entry
99 program levels or record types per job	Improve control and simplify jobs because they no longer have to be artificially split into work segments
Extensive built-in field edits	Save time and money developing advanced data validations
Duplicate data from previous fields	Reduce total input time, improve data accuracy
Hot keys for special functions	Increase keying speed, simplify training
Powerful, easy-to-use file search	Decrease time and cost to modify data
File conversion, reformatting utilities	Easily create the data files required by legacy systems or other programs
Table look-ups	Increase data validation power—check account numbers, employee numbers, etc.
Automatic balancing options	Increase data accuracy, decrease key entry time
Operator statistics reports for performance monitoring, control, and auditing	Reduce costs by improving management of staff and process with measured results
Create and maintain ISAM files or database tables used for input data validation	Decrease costs, improve data accuracy

## Simple Job Setup

The Forms Painter and other development tools are designed for data entry operators and supervisors. Data entry jobs can be set up by the people who know them best.

Development tasks are made easy with an intuitive interface and one dialog window that puts everything at your fingertips, as seen in this Standard Field Definition dialog.



## API—Application Program Interface

The optional Applications Programming Interface (API) allows you to customize *VDE* using the industry-standard C programming language.

## Operator Training

Operator training is simplified with *VDE*. New staff members, part-timers, and infrequent users can start being productive in a matter of minutes.

## VDE Platforms Include...

Windows® 9x/ME/NT/2000/XP

HP-UX®

DEC UNIX

MS/DOS®

Sun Solaris™

Data General Aviiion®

IBM RS/6000®

DEC® VAX/VMS®

Motorola® 68000® and 88000® UNIX

Intel® 80x86 UNIX®

DEC Alpha AXP®

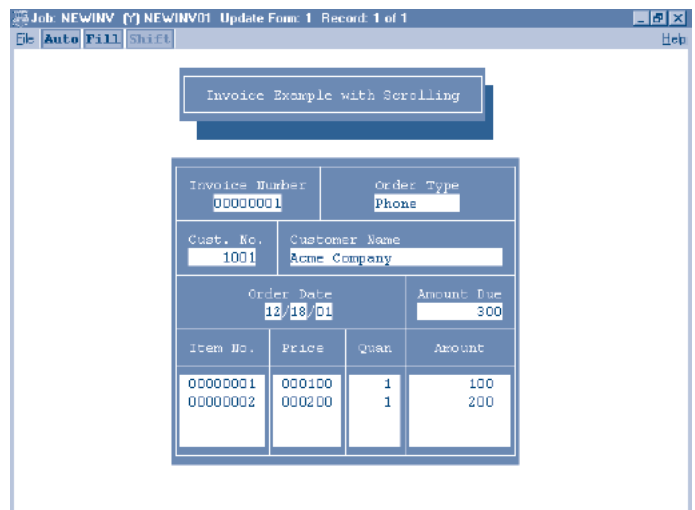
LINUX®

## Cost Effective, Today and Tomorrow

*VDE* lets you replace old, inefficient hardware with more cost effective state-of-the-art computers. *VDE* is available for today's most popular computer platforms. *VDE* users don't rely on obsolete equipment that is unreliable and difficult to maintain.

Your current ongoing data entry labor costs far exceed the initial hardware, software, and start-up costs of switching to *VDE*. Productivity improvements made possible by *VDE* continue to save you money for years to come.

Prepare for the future now. Our key-from-image option is completely compatible with *VDE*. Move to *VDE* now and know that it will be easy to switch to a key-from-image system later.



## VDE Users

A broad spectrum of businesses use *VDE*, from small private companies to large worldwide corporations, including several of the "Fortune 50." Many government agencies are loyal *VDE* users. Other users include banks, educational institutions, medical research facilities, market research firms, and, of course, data entry service bureaus.

Viking has equipped over 20,000 workstations with *VDE* for its clients. We will be glad to provide references from *VDE* users in your geographic area or those with similar application requirements.

## Viking Software Solutions...

*Who we are, what we are, and where we're going*

Viking Software Solutions has been developing and marketing data entry-related software since 1980. Our mission statement is two-fold:

- Provide power/precision data entry tools for the most demanding applications.
- Make them easy to use so end-users and data entry personnel can set up most of their own jobs.

Our knowledgeable technical staff is truly concerned that our customers find the right solutions to their data entry problems. About 75% of our business comes from word-of-

mouth references from our customers. We believe that when we take care of our customers, they will take care of us. It has worked for over 20 years.

Our users testify to their Viking experience—performance superiority, exceptional technical support, and product evolution that continually meets their changing needs. This is evident in the many computer platforms that we support and by the new technology products that we have developed, such as *ImagEntry* and *VDE+Images*™ for keying from document images.



## VIKING SOFTWARE SOLUTIONS™

A Division of Phoenix Software International®

6804 S. Canton Ave., Suite 900  
Tulsa, OK 74136-3419  
(918) 491-6144 Fax (918) 494-2701  
e-mail: [sales@vikingsoft.com](mailto:sales@vikingsoft.com)  
[www.vikingsoft.com](http://www.vikingsoft.com)

Information and products shown in this document are subject to change without notice.

© Copyright 2002-2009 Phoenix Software International, Inc.

Viking Software Solutions, the Viking Ship, Phoenix Software International, ImagEntry, VDE, and VDE+Images are registered trademarks or trademarks of Phoenix Software International, Inc. All other trademarks are the property of their respective owners.