



VDE+Images®

Key-from-Image + Key-from-Paper

VDE+Images combines all the features of the **Viking Data Entry (VDE)**® system with key-from-image technology, allowing you to key from either images or paper with one software package.

No matter how your data is stored, operators benefit from the same interface and features, which reduce training time, increase productivity, and reduce errors.

In addition, **VDE+Images** has specialized capabilities that make it unique among data entry systems...

Key from Non-Standard Document Images

VDE+Images is specifically designed for the tough jobs that defy a standard process:

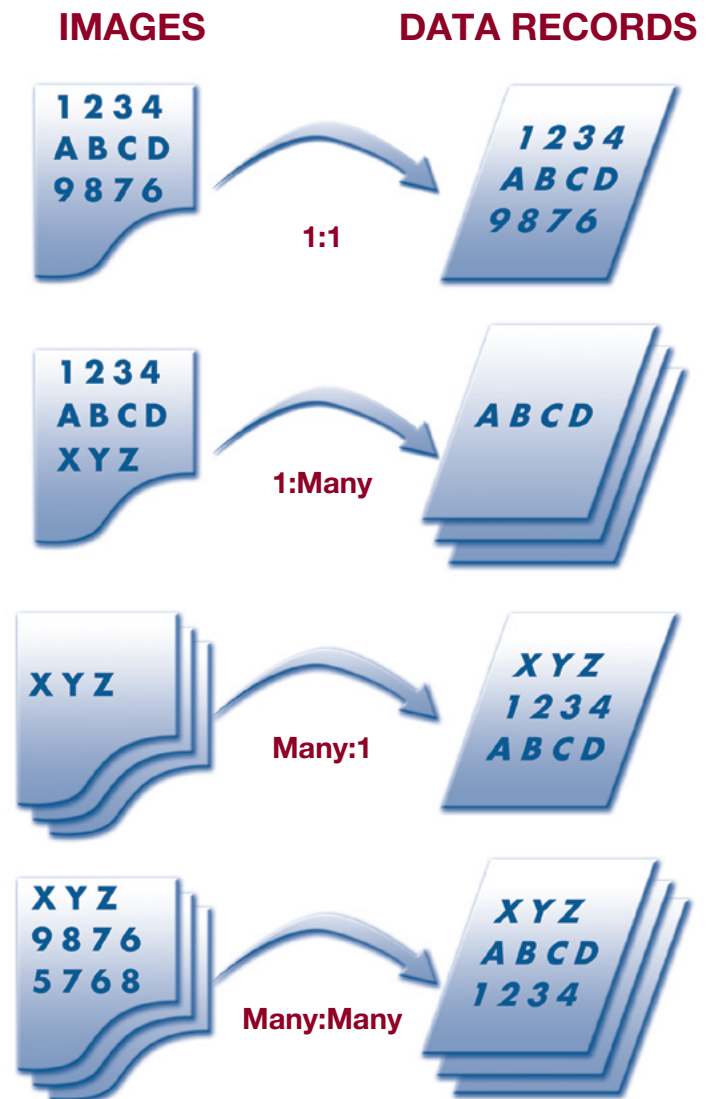
- **Unstructured applications:** Operators can find necessary data elements in document images where order is not predictable or is processed randomly.
- **Exception applications:** Operators see document images with all forms intact to help with OCR/ICR correction. Documents that otherwise would be rerouted as unreadable by the recognition engine may be sent through a key-from-image only process, eliminating paper altogether.
- **Unscannable documents:** Operators can process unscannable documents as key-from-paper so they only need to know one system.

Multiple Relationships Between Images and Data Records

Most imaging systems automatically generate one record for each image. **VDE+Images** is unique in that it allows data records to be stored in the most useful and logical way. You can have data from any number of images on one record, put data from one image on multiple records, or spread data from several images across several records. You choose what works best for you.

This data can also be exported in multiple formats so the same data that has been collected and verified for your IT

department can easily become the data used to build the index for your archival software, a spreadsheet, or perhaps your accounting package. Up to five different file formats can be prepared with the same data in a single step with **VDE+Images** Conversion Utility.



Systems for Data Capture and Document Management

VDE+Images employs all the **Viking Data Entry** system features that equip your process with high-speed, high-volume, high-accuracy keying potential, and add the additional benefits of keying from images. Viking's customers traditionally key data at rates well above the average keying speed of 11,600 keystrokes per hour. This far exceeds the rates associated with other tools that run on the Windows® platform.

VDE+Images has an open architecture and flexible design that makes it easy to integrate with most document imaging systems. **VDE+Images** can be readily customized using the optional Application Programming Interface (API). Users can code custom field edits and exit routines in the industry-standard C language.

When combined with Viking's DocWise® or other similar archiving products, **VDE+Images** can complete your document management system. Viking's software products can easily be integrated with other components to complement existing systems or can be used separately for stand-alone processes.

Data Accuracy

When it comes to validating data and producing the accuracy you need, **VDE+Images** has the goods. **VDE+Images** uses field edits and table lookups to increase accuracy and reduce the amount of keyed-in information. Accuracy is also improved with character-level editing and batch balancing.

Double-key verify, another traditional method to ensure accuracy of sensitive data elements, is also part of the system. **VDE+Images** offers advanced capabilities to further enhance this valuable feature.

Instant rekey verify and email address verification also increase accuracy. The instant rekey feature lets your operators rekey critical information as soon as the field is completed. A field edit for email address verification uses state-of-the-art validation rules to examine email address fields.

Most of all, **VDE+Images** is loaded with a variety of features and methods that allow application-specific editing. And Viking makes it easy to get the development done, too.

Data Balancing

Balancing adds another level of accuracy completely overlooked by many indexing products. **VDE+Images** provides three levels of data balancing frequently used in, but not limited to, financial transactions:

- Crossfoot balancing within a data record
- Subtotal balancing over a group of records (e.g., check and invoice, debits and credits)
- Batch totals and item counts

Image Manipulation

With **VDE+Images**, operators can quickly manipulate the image to locate and key the appropriate data. Hot keys let operators zoom, move, rotate, and invert images with a single keystroke. They can also quickly switch from one portion of the image to another.

The image shows a scanned document titled "WARRANTY REGISTRATION CARD" with handwritten information. Below the scan is a digital form with the same fields.

WARRANTY REGISTRATION CARD
Please return your completed Warranty Card or register on-line.
As a courtesy to you, we will not sell your information to mailing lists.

Serial No: 56-1385 Date of Purchase: 4/1/09 Dealer Name: Amazon
Your Name: Don O'Trephy Phone: 310 555 1234
Address: 255 Elk Avenue

WARRANTY REGISTRATION CARD

SERIAL #	56138	DATE		DEALER	
NAME		PHONE			
ADDRESS					
CITY		STATE		ZIP	

Image snippets can be defined and assigned to specific data fields or groups of fields, presenting operators with the portion of the image that contains the information to be entered. Operators see each corresponding portion automatically as the cursor moves from field to field. Minimizing manual interaction with the image keeps productivity moving at a blazing speed.

Images can be anchored to the left, right, top or bottom of the screen. This gives you the freedom to arrange the screen to best fit individual application document images.

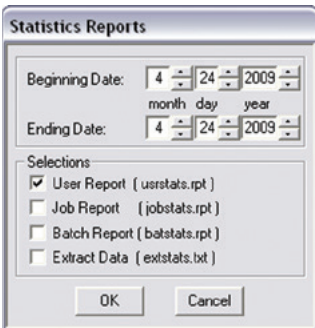
Hardware Requirements

A basic PC running any supported version of Windows is sufficient for the keyer workstation. VDE+Images will work with any Windows-compatible network.

The required monitor size depends on your applications. Many jobs fit on a standard 15" or 17" monitor. A larger monitor may be required if the entire document needs to be displayed. VDE+Images includes support for widescreen monitors.

Function Keys

The fastest operators know that they cannot use a mouse if they are going to key 20,000 keystrokes per hour. Although VDE+Images is fully Windows-enabled, there are hot keys to perform special data entry functions—operators never have to move their hands from the keyboard to use a mouse.



Statistics

It has been said that if you can't measure it, you can't improve it. VDE+Images gathers complete statistics on performance and the amount of labor involved in each job. Reports help you better manage your facility and obtain more accurate information about the cost of jobs.

Imported Data

VDE+Images can import data to pre-populate fields in data records. This data can come from scanners, bar-code readers, MICR readers, recognition engines (OCR, OMR and ICR), and other data sources. For example, the MICR data from checks can be imported into VDE+Images for wholesale lockbox applications.

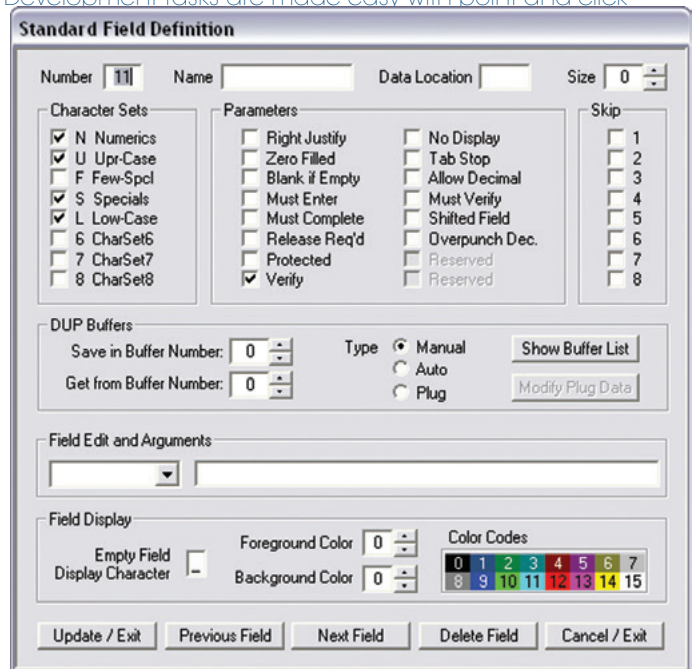
Batch Orientation

While most key-from-image systems are transaction-oriented, VDE+Images is batch-oriented. Viking designed it that way because most documents are scanned and controlled in batches. This is the most logical and efficient way to handle high-speed, high-accuracy applications.

Simple Job Setup

Lead operators or supervisors can design their own jobs. The system contains several tools that simplify the entire process, from screen design to output format. Ease of use is one of our top priorities.

Development tasks are made easy with point-and-click



interface panels and dialog windows that put everything at your fingertips, as seen in this Standard Field Definition dialog box.

Some Application Examples

- Indexing images
- Litigation support (such as bankruptcy processing)
- Public records (such as land titles, state taxes)
- Distributed billing
- Wholesale lockbox
- Accounts receivables
- Freight bills or bills of lading
- Surveys (such as statistical analysis data)

Viking Software Solutions...

Who we are, what we are, and where we're going

Viking Software Solutions has been developing data entry-related software since 1980. Our mission statement is to provide best-practice human interface tools for the most demanding data and document processes and make them easy to use so end-users can maximize productivity.

Our knowledgeable technical staff take pride in helping our customers find the right solutions for their data processes. Much of our business comes from word-of-mouth references from our customers. Our users testify to their Viking

experience—superior performance, exceptional technical support, and product evolution that continually meets their changing needs.

Price, product and service are all key to success in the software business. With Viking you can be sure that your software will be reasonably priced, expertly supported, and will remain an asset that will serve your company for a long time to come.

The screenshot displays a software interface for a customer order. The window title is 'CUSTOMER ORDER' and the main heading is 'Bookers Office Supply'. The interface includes a form for customer information and a table of items.

CUSTOMER ORDER

Customer Number 10027
Date 07/07/08 Express
Customer Name Design and Lighting
Phone # 272-2259
Order Total 000008688

Bookers Office Supply

Customer # 1 0 0 2 7 Date 7-7-08 Express
Name Design and Lighting Phone # 272-2259

Item	Description	Quan	Price	Total
407371	Wall Pocket, Letter	1	18.99	18.99
407373	Wall Pocket, Legal	1	19.99	19.99
778243	Invisible Tape	2	5.69	11.38
133557	1/3" Tab Folders, 25	1	6.99	6.99
778257	Colored Tape	1	5.69	5.69
407125	Magnetic Filing Pocket	1	10.49	10.49
TOTAL				Cont'd

Item #	Description	Quan	Price	Total
4	407125 Magnetic Filing Pocket	001049		
	407371 Wall Pocket, Letter	001899		
	407373 Wall Pocket, Legal	001999		
	407423 Business Card Display	000499		
	407575 Magazine Rack	001999		

www.vikingsoft.com



VIKING SOFTWARE SOLUTIONS®

A Division of Phoenix Software International®

© Copyright 2015 Phoenix Software International, Inc. Viking Software Solutions, the Viking ship logo, VDE, VDE+Images and DocWise are trademarks or registered trademarks of Phoenix Software International, Inc. Windows is a registered trademark of Microsoft Corporation. All other trademarks are the property of their respective owners.

Telephone: (918) 491-6144 ■ Fax: (918) 494-2701 ■ e-mail: sales@vikingsoft.com